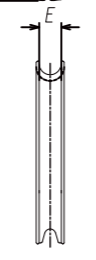
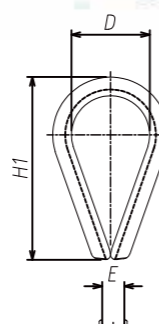
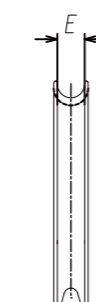
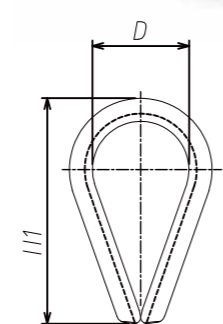


Wire Rope Thimble

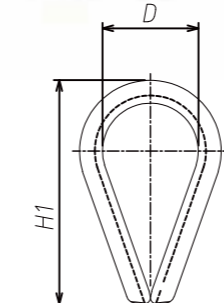
1. DIN6899A Thimble

Part No.	Rope Dia (mm)	Weight (kg/100pc)	Dimensions(mm)		
			D	E	H1
TKR0380	2.50	0.14	10	3	21.5
TKR0381	3	0.35	11	3.5	23.5
TKR0382	4	0.42	13	5	28.5
TKR0383	5	0.8	14	6	30
TKR0384	6	0.81	15	7	33
TKR0385	7	1.1	16	8	35
TKR0386	8	1.7	18	9	39
TKR0387	9	2.1	20	10	43
TKR0388	10	3.5	22	11	47.5
TKR0389	11	3.7	24	12	51.5
TKR0390	12	5.25	26	13	56.5
TKR0391	13	7.25	28	14	61
TKR0392	15	8.33	32	16	69.5
TKR0393	16	17.9	35	18	78
TKR0394	18	27	40	20	86.5
TKR0395	20	35.5	44	22	95
TKR0396	26	-	52	105	48



2. DIN6899B Thimble

Part No.	Rope Dia (mm)	Dimensions(mm)		
		D	E	H1
TKR0397	2.50	12	3	19
TKR0398	3.50	13	4	21
TKR0399	4	14	5	23
TKR0400	5	16	6	25
TKR0401	6	18	7	28
TKR0402	7	20	8	32
TKR0403	9	24	10	38
TKR0404	11	28	12	45
TKR0405	13	32	14	51
TKR0406	15	36	16	58
TKR0407	17	40	18	64
TKR0408	18	45	20	72
TKR0409	20	50	22	80
TKR0410	22	56	24	90
TKR0411	24	62	26	99
TKR0412	26	70	28	112
TKR0413	28	75	30	120
TKR0414	30	80	32	128
TKR0415	32	92	34	152



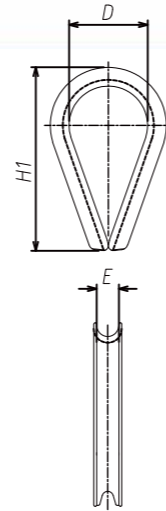
US Type G411 Thimble .3

Part No.	Rope Dia (in.)	Weight (lbs/100pc)	Dimensions(in.)		
			H1	D	E
TKR0440	1/8	3.5	1.94	0.69	0.16
TKR0441	3/16	3.5	1.94	0.69	0.22
TKR0442	1/4	3.5	1.94	0.69	0.28
TKR0443	5/16	4.0	2.13	0.81	0.34
TKR0444	3/8	6.7	2.38	0.94	0.41
TKR0445	1/2	12.5	2.75	1.13	0.53
TKR0446	5/8	34.5	3.50	1.38	0.66
TKR0447	3/4	47.1	3.75	1.63	0.78
TKR0448	7/8	84.6	5.00	1.88	0.94
TKR0449	1	97.5	5.69	2.50	1.06
TKR0450	1-1/8 - 1-1/4	175	6.25	2.75	1.31

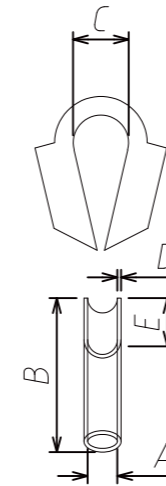
Wire Rope Thimble

4. US Type G414 Thimble

Part No.	Rope Dia (in.)	Weight (lbs/100pc)	Dimensions(in.)		
			H1	D	E
TKR0451	1/4	7	2.19	0.88	0.28
TKR0452	5/16	14	2.50	1.06	0.34
TKR0453	3/8	23	2.88	1.12	0.41
TKR0454	7/16	37	3.25	1.25	0.47
TKR0455	1/2 - 9/16	50	3.62	1.50	0.59
TKR0456	5/8	82	4.25	1.75	0.66
TKR0457	3/4	157	5.00	2.00	0.78
TKR0458	7/8	190	5.50	2.25	0.94
TKR0459	1	280	6.12	2.50	1.06
TKR0460	1-1/8 - 1-1/4	600	7.00	2.88	1.31
TKR0461	1-1/4 - 1-3/8	830	9.08	3.50	1.44
TKR0462	1-3/8 - 1-1/2	1250	9.00	3.50	1.56
TKR0463	1-5/8	1600	11.25	4.00	1.72
TKR0464	1-3/4	1860	12.19	4.50	1.84
TKR0465	1-7/8 - 2	2780	15.12	6.00	2.09
TKR0466	2-1/4	3200	17.50	7.00	2.38



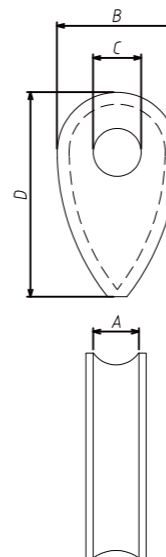
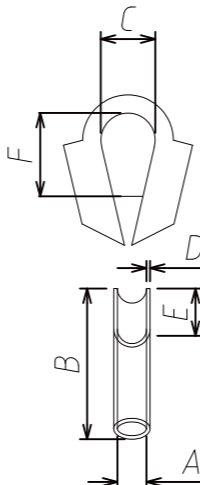
Tube thimble Painted or Galvanized.6



Part No.	Rope Dia. (mm)	Weight (kg)	Dimensions(mm)				
			A	B	C	D	E
TKR0478	12	0.25	12	95	23	4	8
TKR0479	15	0.42	15	109	27	5	10
TKR0480	17	0.5	17	115	27	5	10
TKR0481	19	0.6	19	125	32	5	12
TKR0482	22	0.75	22	140	35	5	15
TKR0483	25	1.23	25	158	45	6.3	16
TKR0484	28	1.54	28	176	45	7	16
TKR0485	30	1.82	30	195	47	7	18
TKR0486	35	2.4	35	210	60	7	22
TKR0487	45	3.3	45	253	70	7	27
TKR0488	50	4.06	50	280	75	7	28

5. Tube Thimble with gusset

Part No.	Rope Dia. (mm)	Weight (kg)	Dimensions(mm)					
			A	B	C	D	E	F
TKR0467	12	0.25	12	90	23	4	8	48
TKR0468	15	0.42	15	109	27	5	10	49
TKR0469	17	0.5	17	115	27	5	10	49
TKR0470	19	0.6	19	125	32	5	12	43
TKR0471	22	0.75	22	140	35	5	15	50
TKR0472	25	1.23	25	158	45	6.3	16	59
TKR0473	28	1.54	28	176	45	7	16	61
TKR0474	30	1.82	30	195	47	7	18	78
TKR0475	35	2.4	35	210	60	7	22	93
TKR0476	45	3.3	45	253	70	7	27	94
TKR0477	50	4.06	50	280	75	7	28	96



DIN3091 Type Thimble with Hole .7



Part No.	Size (mm)	Dimensions(mm)			
		A	B	C	D
TKR0489	8	9	40	14	56
TKR0490	10	11	50	18	70
TKR0491	12	13	60	21	84
TKR0492	14	16	70	25	98
TKR0493	16	18	80	28	110
TKR0494	18	20	90	31	130
TKR0495	20	22	100	35	140
TKR0496	22	24	110	38	150
TKR0497	24	26	120	41	170
TKR0498	26	29	130	44	180
TKR0499	28	31	140	47	200
TKR0500	32	35	160	53	220
TKR0501	36	40	180	59	250
TKR0502	40	44	200	65	280
TKR0503	44	48	220	70	310